



New University of Georgia Muscadine Cultivars

Dr. Patrick Conner
UGA-Tifton

‘Lane’ Muscadine

- Tested as Ga. 5-1-45.
- ‘Supreme’ x ‘Tara’ progeny.
- Released in 2012.
- Named for Dr. Ron Lane, previous UGA muscadine breeder (1969-1996) who released ‘Summit’, ‘Triumph’, ‘Tara’ and ‘Scarlett’.



Berry quality of ‘Lane’ muscadine at Tifton, Ga. (2012-2014).

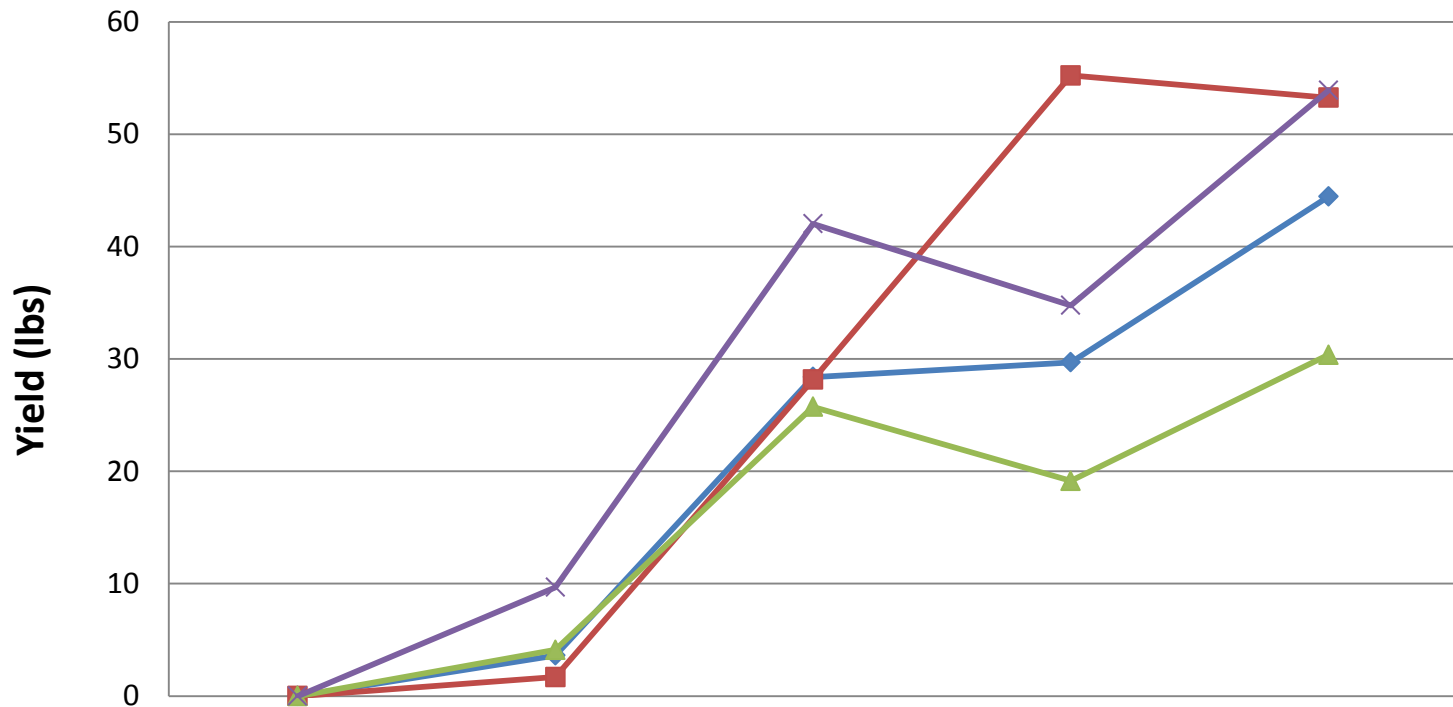
Cultivar	Flower type	Berry color	Berry weight (g)	Berry diameter (mm)	Percent soluble solids of all harvests
Lane	SF	Black	9.2 d	25 c	15.5 a
Supreme	F	Black	14.9 a	30 a	14.5 ab
Fry	F	Bronze	12.2 b	28 b	14.5 ab
Tara	SF	Bronze	10.4 c	26 c	13.5 b
Sig.			0.001	0.001	0.023

Early harvest of 'Lane' muscadine at Tifton, Ga. (2012-2014).

Cultivar	Avg. day of first harvest	Percent of total yield of first harvest	Percent soluble solids (Brix) of first harvest
Lane	Aug. 4 b	51	14.8
Supreme	Aug. 18 a	56	14.8
Fry	Aug. 18 a	80	15.2
Tara	Aug. 5 b	61	14.2
Sig.	0.001	NS	NS

Productivity at Tifton, Ga., first five years from planting (2010-2014).

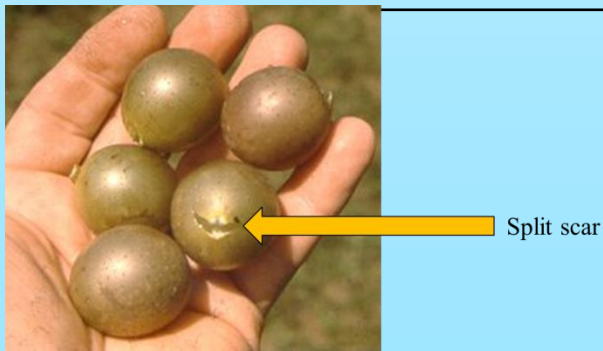
Pounds of fruit per 10 foot vine.

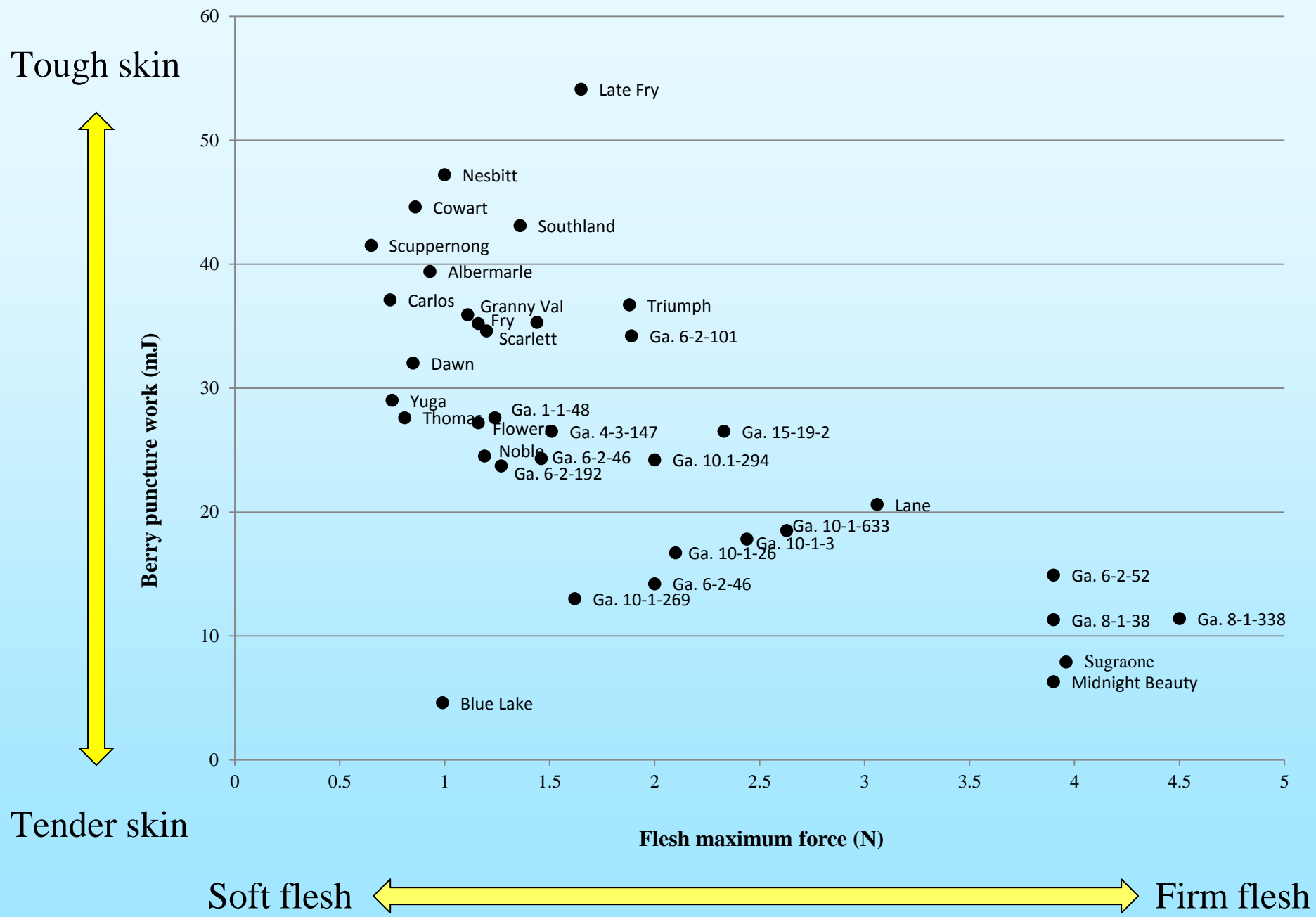


	2010	2011	2012	2013	2014
◆ Lane	0	3.6 b	28.4	29.7 bc	44.4 a
■ Supreme	0	1.7 b	28.2	55.2 a	53.2 a
▲ Fry	0	4.1 b	25.7	19.1 c	30.4 b
✕ Tara	0	9.7 a	42.0	34.8 b	53.9 a

Berry quality of 'Lane' muscadine at Tifton, Ga. (2012-2014).

Cultivar	% Rot	% Split	% Tear	% Dry	% Usable
Lane	4 b	23 a	25 b	52 b	74 b
Supreme	4 b	13 b	28 ab	59 b	84 a
Fry	13 a	18 ab	33 a	49 b	72 b
Tara	10 b	5 c	10 c	85 a	86 a
Sig.	0.001	0.001	0.001	0.001	0.001





Prominent features of 'Lane' muscadine

- 'Lane' has moderate vigor and productivity.
- Size is similar to other self-fertile cultivars.
- Currently the only self-fertile early black cultivar.
- Berries have a very firm flesh and hold on the vine well.



Supreme



Lane



‘Lane’ recommendation

‘Lane’ has moderate yields and can split at the stem scar. We currently recommend planting ‘Lane’ for early season black production and transitioning into ‘Supreme’ for main season black production.



'Lane' availability

'Lane' is patented by UGA and is available only from licensed nurseries.

Ison's Nursery

Bottom's Nursery

Horner Farms

Old Courthouse Nursery

Tinga Nursery



‘Hall’ Muscadine

- Tested as Ga. 1-1-48.
- ‘Fry’ x ‘Tara’ progeny.
- Released in 2014.
- Named for Dr. Mel Hall, previous UGA muscadine breeder (1997-2003) who made the cross.



Berry quality of ‘Hall’ muscadine at Tifton, Ga. (2012-2014).

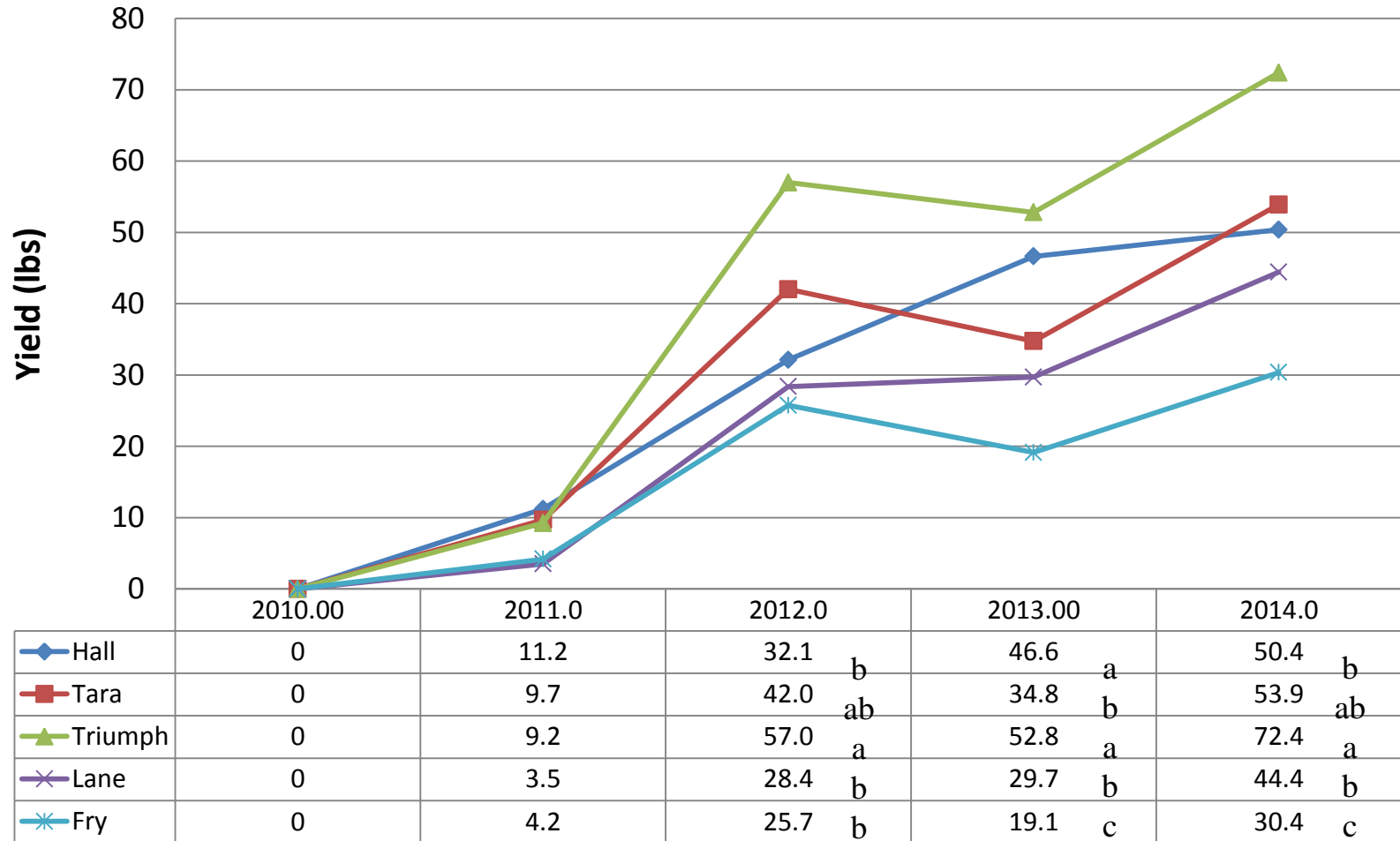
Cultivar	Flower type	Berry color	Berry weight (g)	Berry diameter (mm)	Percent soluble solids of all harvests
Hall	SF	Bronze	10.3 b	26 b	15.6 a
Tara	SF	Bronze	10.4 b	26 b	13.5 b
Triumph	SF	Bronze	9.5 c	25 c	15.8 a
Fry	F	Bronze	12.2 a	28 a	14.5 ab
Sig.			0.001	0.001	0.011

Early harvest of 'Hall' muscadine at Tifton, Ga. (2012-2014).

Cultivar	Avg. day of first harvest	Percent of total yield of first harvest	Percent soluble solids (Brix) of first harvest
Hall	Aug. 2 a	47 bc	14.9
Tara	Aug. 5 a	60 ab	14.2
Triumph	Aug. 4 a	33 a	15.3
Lane	Aug. 4 a	51 bc	14.8
Fry	Aug. 18 b	74 a	14.8
Sig.	0.001	0.001	NS

Productivity at Tifton, Ga., first five years from planting (2010-2014).

Pounds of fruit per 10 foot vine.



Berry quality of ‘Hall’ muscadine at Tifton, Ga. (2012-2014).

Cultivar	% Rot	% Split	% Tear	% Dry	% Usable
Hall	17	3 a	7 b	90 a	81
Tara	10	5 b	10 b	85 a	86
Triumph	12	6 b	27 a	67 b	82
Fry	13	18 a	33 a	49 c	72
Sig.	NS	0.001	0.001	0.001	NS

Prominent features of 'Hall' muscadine

- 'Hall' has good vigor and productivity, similar to 'Tara'.
- Better brix and flavor than 'Tara'.
- Very good picking scar, low percentage of splits and tears.
- Color is more yellow than other bronze cultivars.
- Size is similar to other self-fertile cultivars.



‘Hall’ recommendation

‘Hall’ is more yellow in color than many other bronze cultivars.

‘Hall’ should be sprayed and picked promptly to minimize rot infection. ‘Hall’ is recommended as a replacement for ‘Tara’ and as an early season, self-fertile bronze cultivar.



‘Hall’ availability

‘Hall’ is patented by UGA and is available only from licensed nurseries.

Ison’s Nursery



A close-up photograph of a bunch of green grapes. The grapes are round and have a light green color with numerous small, dark brown spots scattered across their surfaces. The lighting is bright, creating highlights on the smooth skin of the grapes. The word "Questions?" is overlaid in the center in a white, serif font.

Questions?